

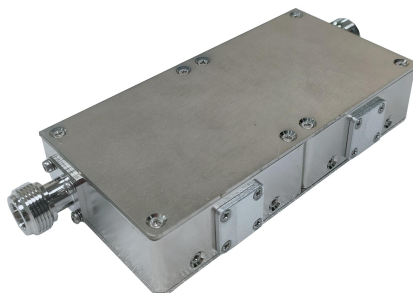
150-174MHz Dual Junction Isolator N-Female

Electrical

Model No.	HT-N-1-100/150-174MHz
Frequency(MHz)	150-174
Insertion loss(dB)	≤ 1.2
VSWR	≤ 1.25
Isolation(dB)	≥ 40
Impedance (Ω)	50
Forward Power	100W CW
Reverse Power	100W
Connector	N-female/female
Weight(kg)	0.65
Dimensions(mm) excl connector	120*60*25.5

Environment

Operation temperature	-35 ° C to +75 ° C
Storage temperature	-55 ° C to +85 ° C
Relative humidity	5% - 95%
Application	Indoor



Outline drawing

Unit: mm

