

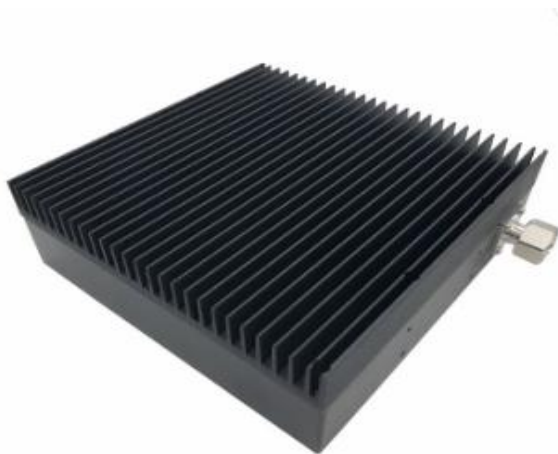
### 617-3800MHz 100W Load

- Wide Frequency Band 617-3800MHz.
- 2G/3G/4G/LTE/5G Coverage.
- Low VSWR.
- Low Passive Intermodulation.
- Widely used for In-building Solutions.

Specifications :

Part No.	9318500151
Model	4.3-10 type
Frequency Bands	617-3800MHz
VSWR	≤1.25
PIM (dBc)	≤-160dBc@2*43dBm
Average Power(W)	100
Impedance	50 ohm
Connector	4.3-10 male
Color	Black
Ingress Protection	IP65
Temperature (deg)	-30~+125
Relative Humidity	5%-95%
Dimensions(mm)	200*200*64 (Connector Excluded)
Net Weight (kg)	3.98

Product Picture:



Outline drawing :

